

# Flexible Solutions for More Efficient Reverse Vending



# Line Modul: Backroom Component for Greater Flexibility

Increase customer satisfaction with our backroom and compacting solutions that combine easy cleaning with high performance and a small footprint.



Reverse vending offers great opportunities for communicating with customers and enhancing their loyalty. However, in order to tap the full potential, the entire disposal process needs to be designed in a simple and efficient way. The Line Modul's innovative concept allows retailers to exploit a wide number of new options to optimize their returns process.

If you're looking for a flexible solution that can be adapted to your needs and implemented within an extremely short time frame, the Line Modul is the ideal component for you.

## Planning and Processes

RE DEPOSIT will work together with you to design the optimum configuration for your reverse vending requirements.

## Modern Company Technology

The volume of PET containers is reduced by over 50%. For more efficiency in the PET cycle.



## Your advantages at a glance

### **Less pollution**

The integration of comprehensive liquid management functionality increases system availability.

### **Easy cleaning**

All surfaces and components are easy to access. A cleaning program helps store staff maintain a high standard of cleanliness.

### **Takes up less space**

Measuring 0.9 x 0.6 m, the Line Modul has a total footprint of little more than 0.5 m<sup>2</sup>.

### **Saves costs**

Longer disposal cycles represent a significant savings potential and enable more efficient shift planning.

### **Scalable**

New modules can be added to the backroom at any time, bringing practically limitless scalability.

### **Reliability**

High-quality materials and a solid construction ensure trouble-free operation.

# Fit for the Future

## A systematic approach to handling empty beverage containers

Conveying, sorting, compacting and collecting – sophisticated functionality on a minimal footprint.

### Save conveying

A U-shaped mono conveyor belt with an additional side guide ensures stable transport. If required, empty containers can also be deflected 90 degrees to the left or right.

### Less contamination

Fully cladded interior. Residual liquid is drained off to a central collection tank.

### Flexible bin location

The bin can be placed next to or beneath the Line Modul, depending on the space situation. A sensor ensures that the bin is correctly positioned.

### Everything under control

Fully-automatic sensors and controllers are used to monitor the system's status and available capacity.

### Fast switching

Bins are clearly visible for staff and require a minimum of time and space for switching.

### Easy to clean

Cleaning is controlled by a single one-touch button, making the process much easier. Long training is not required.

### Ease of access

All relevant components can be readily accessed by staff and maintenance personnel from the service side.

## Technical Data

### 1. Revendo reverse Vending System

### 2. Conveyor Belt

- DPG-compliant connection of flexible length between reverse vending system and Line Modul

### 3. Compact Crate Sorting

- Efficient connection of several reverse vending systems for fast and intelligent crate handling

### 4. Line Modul

- Performance: up to 38 containers/min
- Dimensions in mm (L x B x H): 900 x 600 x 1,800 • Width cutting unit cover: 220 mm
- Weight with one cutting unit: approx. 290 kg

- Weight with two cutting units: approx. 350 kg
- Power supply: 3 ~ 400 V/50 Hz
- Power consumption when idle: 15 W
- Power consumption when conveyor belt running (reusable containers): 50 W
- Power consumption when compactor running (compacting containers): 1,500 W
- Conformity: declaration of incorporation for partly completed machinery
- DPG safety requirements: compliance
- Temperature: +10 to + 40 °C

### 5. Bottle Table with Unscrambler

- Flexible solution for handling single reusable containers





# Small Supermarkets and Discounters

## More capacity on a minimal footprint

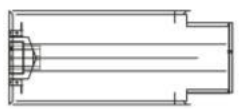
The Line Modul enables even smaller supermarkets to deal with high volumes of returned containers.

### Legend

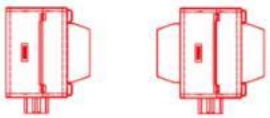
**Reverse vending solution**  
R9040



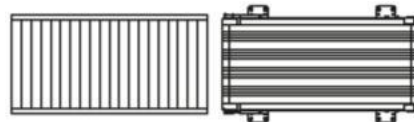
**Bottle table with unscrambler**



**Line Modul**  
1 x cutting unit/2 x cutting units



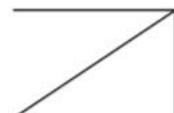
**Crate transport**  
Belt and roller conveyor

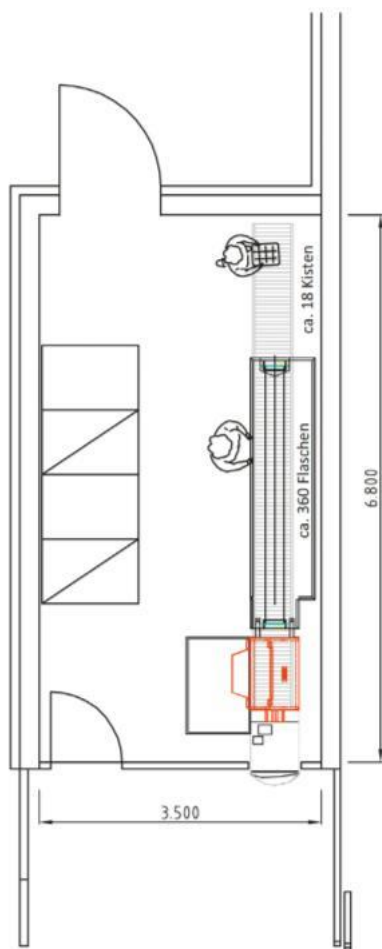


**Bin and removal direction**



**Space for pallets**





**1,98 m<sup>2</sup>**

That's all the space a Line Modul with bin needs.

### Installation Scenario 1

#### Configuration

- 1x R9040
- 1x Line Modul (cutting unit left)

#### Space required

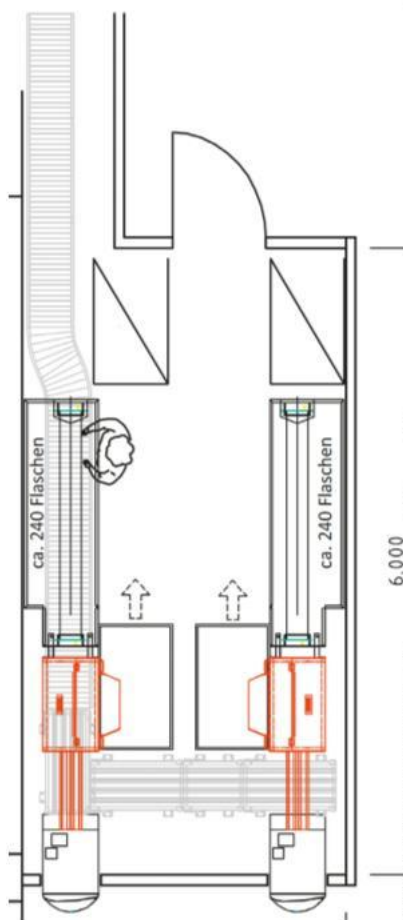
- Approx. 2 m<sup>2</sup> (including bin)

#### Capacity

- Up to 600 PET containers  
(70 % 1.5 l PET, 30 % 0.5 l PET bottles)

#### Ideal for

- Small supermarkets and discounters with a sales area of between 800 and 3,500 m<sup>2</sup>
- Medium volume of empty containers: approx. 1,000 to 2,000 non-reusable bottles, approx. 750 reusable bottles, approx. 150 crates daily



### Customer Satisfaction

Two reverse vending systems with Line Moduls ensure enhanced customer service and longer disposal cycles.

### Installation Scenario 2

#### Configuration

- 2x R9040
- 2x Line Modul (1x cutting unit left and 1x right)

#### Space required

- Approx. 4 m<sup>2</sup> (including 2 bins)

#### Capacity

- Up to 1,100 PET containers  
(70 % 1.5-l-PET, 30 % 0.5-l-PET bottles)

#### Ideal for

- Small supermarkets and discounters with a sales area of between 800 and 3,500 m<sup>2</sup>
- Medium volume of empty containers: approx. 2,000 to 4,000 non-reusable bottles, approx. 1,500 reusable bottles, approx. 150 crates daily

# Medium-Sized Markets and Discounters

## Maximum capacity on a minimal footprint

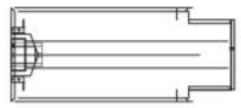
Handling high volumes of empty containers even in restricted spaces  
– thanks to the double cutting unit.

### Legend

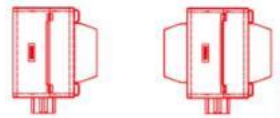
**Reverse vending solution**  
R9040



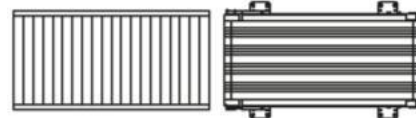
**Bottle table with unscrambler**



**Line Modul**  
1 x cutting unit/2 x cutting units



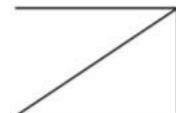
**Crate transport**  
Belt and roller conveyor



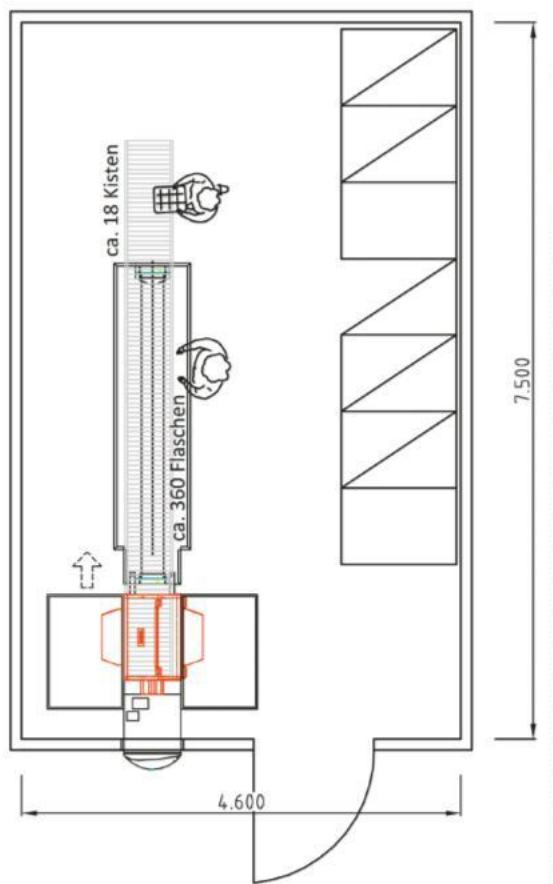
**Bin and removal direction**



**Space for pallets**







## Double Cutting Unit

Whether you want to separate PET containers from cans or increase your capacity – the Line Modul brings maximum performance.

### Installation Scenario 3

#### Configuration

- 1x R9040
- 1x Line Modul (double cutting unit)

#### Space required

- Approx. 3 m<sup>2</sup> (including 2 bins)

#### Capacity

- Up to 1,100 PET containers  
(70 % 1.5 l PET, 30 % 0.5 l PET bottles)

#### Ideal for

- Medium-sized supermarkets and discounters with an approximate sales area of between 2,500 and 4,500 m<sup>2</sup>
- Medium volume of empty containers: approx. 3,000 to 5,000 non-reusable bottles, approx. 1,500 reusable bottles, approx. 150 crates daily

## 2,200 PET Containers

Thanks to the Line Modul and the new compaction technology, medium-sized stores can now handle volumes that were previously restricted to much larger markets.

### Installation Scenario 4

#### Configuration

- 2x R9040
- 3x Line Modul (1x double cutting unit, 2x cutting unit left)

#### Space required

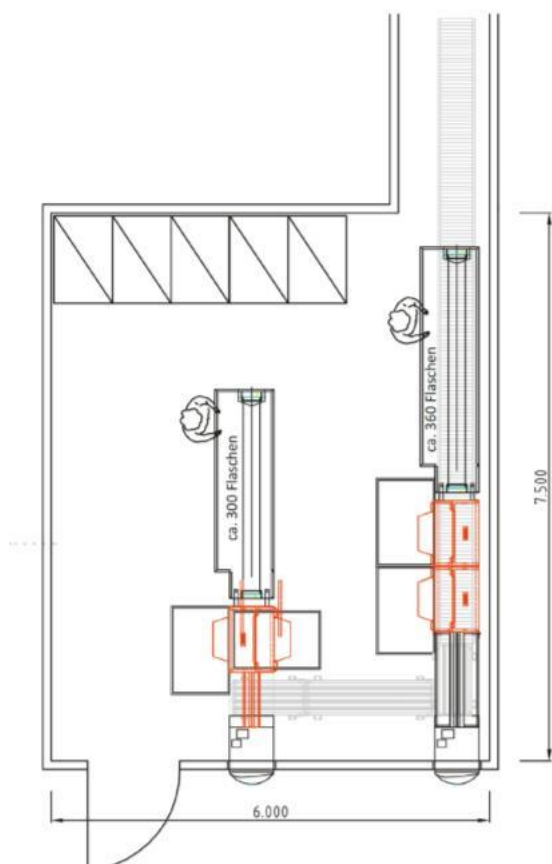
- Approx. 7 m<sup>2</sup> (including 4 bins)

#### Capacity

- Up to 2,200 PET containers  
(70 % 1.5 l PET, 30 % 0.5 l PET bottles)

#### Ideal for

- Medium-sized supermarkets and discounters with an approximate sales area of between 2,500 and 4,500 m<sup>2</sup>
- Medium volume of empty containers: volume of approx. 3,000 to 5,000 non-reusable bottles, approx. 1,500 reusable bottles, approx. 150 crates daily



# Large Supermarkets and Hypermarkets

Highest level of performance – on a daily basis

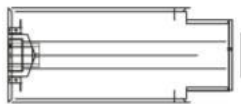
Practically unlimited scalability means stores can create additional capacities and optimize staff planning – even when handling several thousand containers a day.

## Legend

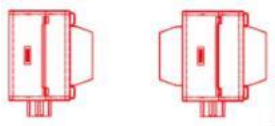
**Reverse vending solution**  
R9040



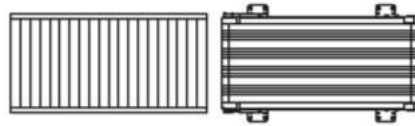
**Bottle table with unscrambler**



**Line Modul**  
1 x cutting unit/2 x cutting units



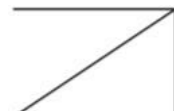
**Crate transport**  
Belt and roller conveyor

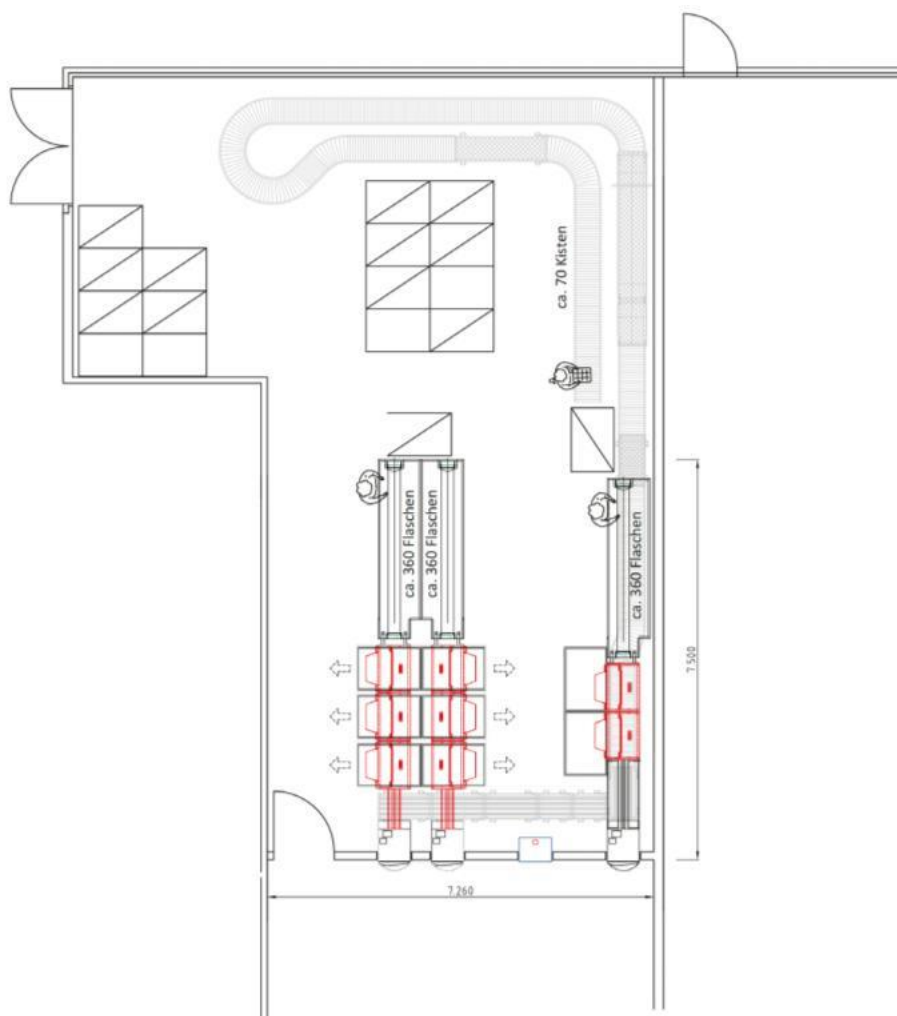


**Bin and removal direction**



**Space for pallets**





## Installation Scenario 5

### Configuration

- 3x R9040
- 8x Line Modul (5x cutting unit left and 3x right)

### Space required

- Approx. 12–15 m<sup>2</sup> (including 8 bins)

### Capacity

- Up to 4,400 PET containers  
(70 % 1.5 l PET, 30 % 0.5 l PET bottles)

### Ideal for

- Large supermarkets and hypermarkets with an approximate sales area of between 3,500 and 10,000 m<sup>2</sup>
- High volume of empty containers:  
approx. 4,000 non-reusable bottles  
approx. 1,000 reusable bottles, over  
1,000 crates daily  
(system has practically unlimited scalability)

### Special Feature

- In this scenario, there is storage space for around 80 crates and over 1,000 reusable bottles on the bottle tables

## Longer disposal cycles

Thanks to the new compaction technology, bins often need to be emptied only once a day.

## Shift planning

Significant cost-cutting potential thanks to optimized deployment of backroom staff.

## Availability

Using several Line Moduls increases availability. If a bin is full, the system switches automatically to the next module.

